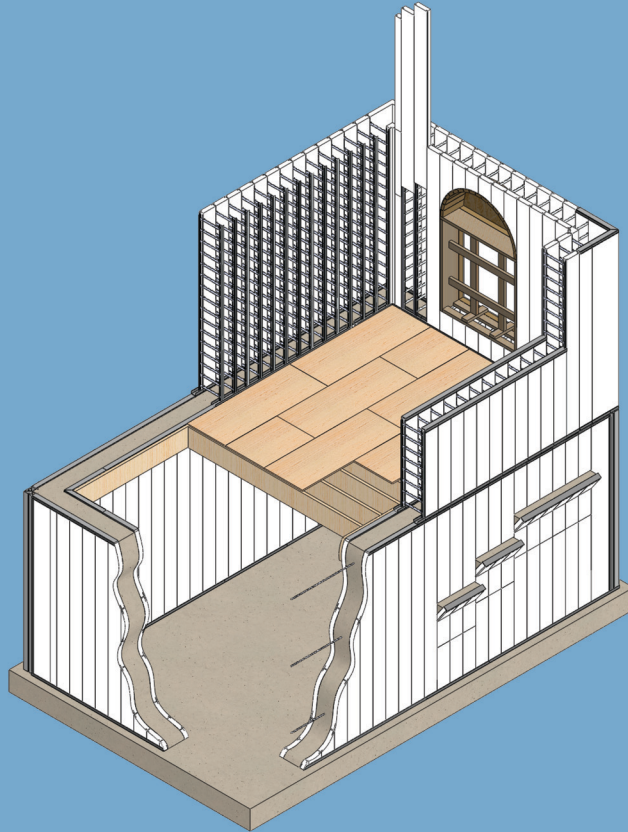


TF THERMO FORM

THE VERTICAL ICF



EASY TO INSTALL ICF THAT RESULTS IN SOLID, BEAUTIFUL STRUCTURES



**TF FORMING
SYSTEMS**

800.360.4634
www.tfsystem.com



CONTRACTOR'S NEEDS

HISTORY

In January of 1994, Gerald Spude drew a rough sketch of a proposed Insulated Concrete Form System and presented it to Don Rudolph across a lunch table at a small neighborhood café in Sturgeon Bay, WI. Both Gerald and Don considered it a good enough idea to investigate further. They named this new ICF system ThermoForm, and incorporated a new company in February of 1994, to develop, manufacture and distribute the new idea.

For the first two years, ThermoForm was a horizontal ICF that performed similar to other horizontal block ICF systems in that it required extensive bracing, and extreme care during concrete pours in order to achieve acceptable quality wall dimensions. All that changed in 1996. Mr. Spude suggested that the form components be erected in a vertical fashion, similar to conventional, removable, concrete forms. ICF walls could now be easily formed and result in walls that were straight and true to dimension.

Our history proves we are an innovative and ever-evolving company that is dedicated to improving and providing the best products in the industry.

The history of ICF's dates back to the period after World War II, when blocks of treated wood fibers held together by cement were used in Switzerland. In the 1940s and 1950s, chemical companies developed plastic foams, which by the 1960s allowed a Canadian inventor to develop foam block that resembles today's typical ICFs. Europeans were developing similar products around the same time. In the 1980s and 1990s, some American companies got involved in the technology, manufacturing blocks and panels or planks.

“Our history proves we are an innovative & ever evolving company that is **dedicated to improving & providing the best products in the industry.**”



The *Beauty* of Concrete

Energy Efficient

- Lower utility bills due to the thick foam insulation on both sides of the concrete

Increased Safety & Protection

- Burn rating of up to 4 hours
- Tornado, hurricane, flood & earthquake resistant
- Blast resistant

Healthy Environment

- Termite resistant
- Allergen & mold resistant

In the end, you will have a dynamic and innovative structure that is built to last for centuries, not decades. While you own it, it will provide superior results, costing you less to manage while offering greater comfort for those who reside inside.

Profitable

- Low maintenance
- Easy to use so less time on job
- Insurance discounts
- Building with the ThermoForm system will cost you approximately 3% more than conventional building, but with your maintenance and energy savings, you will make that up in the first year

Earth Responsible

- Little to no jobsite waste; less debris in landfills
- Recycled components
- No depletion of forests
- Offers sound depletion for quiet environments & reduced noise pollution

Solid Ideas. Concrete Thinking. Sound Results.

Why ThermoForm?

In a Word: VERTICAL



- Easy to use and install
- Reduced risk of blowouts
- Vertical orientation allows for design flexibility
- Ability to slide panels to accommodate tall wall pours & consolidation

- Available kicker, whaler & strong-back system for exceptional rigidity & straight, true walls
- Ability to install & pour in cold climates; expands days to build
- Light weight components offer safety to crew



- No specialized, heavy equipment needed
- Limited waste on jobsite
- Expands your product/service offering
- Minimal upfront investment

ThermoForm's Versatility

RESIDENTIAL

In the last 19 years, thousands of homes have been built using the ThermoForm system. Our clients experience homes free of mold, allergens and drafts. They boast of lower utility bills and overall comfortable homes year round.



COMMERCIAL

From wineries to fitness centers and everything in between, TF has been called upon to build commercial structures that are aesthetically pleasing but fit the owner's needs.



OFFICE & INDUSTRIAL

Large office and industrial spaces can use a great deal of energy to maintain a comfortable indoor environment. With the ThermoForm system, insulation on both sides of the concrete wall provide greater temperature control and energy savings.



EDUCATIONAL, INSTITUTIONAL, MEDICAL & AGRICULTURE



Whatever your need, TF can build to suit your specific requirements. Our vertical, insulated system offers soundproof, healthier options for those residing within the building. We can build structures that meet the design you need while lowering utility bills, decreasing noise and allergens, and offering a safe environment from harsh weather extremes.

Call us today to schedule a complimentary consultation to determine if our system is right for your project.

800.360.4634
www.tfsystem.com

**Training Seminars
& AIA CE Courses
AVAILABLE
NOW!**

We are more than an ICF company.

We are pioneers in resilient building.

We are TF Forming Systems.

TF FORMING SYSTEMS